



Index No

1. Validity of information depends on,
- Timeliness and meaningfulness.
 - Completeness and interconnectivity.
 - Accuracy and ability to communicate.

Which of the following is true?

- (1) a and b (2) a and c (3) b and c (4) All of the above.

2. Which one of the following contains information?

- (1) Color of a bag (2) Weight of a student
(3) Weather report of tomorrow (4) Price of a mobile phone

3. Sayuri gives two bangles and one red colour hand bag to Priyani". In this statement "two bangles and red colour hand bag" are respectively examples of..

- (1) Quantitative data (2) Qualitative data
(3) Quantitative data & Qualitative data (4) Qualitative data & Quantitative data

4. IBM PCs, Microprocessors, operating systems with GUI are mostly related with,

- (1) 1st Generation computers (2) 2nd Generation computers
(3) 3rd Generation computers (4) 4th Generation computers

5. A very small computer that can be held on the palm of a person is called.....

- (1) Laptop (2) PDA (3) Micro Computer (4) Personnel Computer

6. Which of the following is a type of impact printer?

- (1) Inkjet printer (2) Daisywheel printer
(3) Laser printer (4) Bubble jet printer

7. In the Windows operating system, deleted files are temporarily stored in

- (1) Recycle Bin (2) My Computer (3) My Documents (4) Task Bar

8. Examples for input device, output device and storage device respectively are,

- (1) Microphone, Speaker and CD (2) Speaker, Printer and DVD
(3) Keyboard, Printer and plotter (4) Mouse, Joystick and DVD

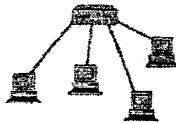
9. Which of the following is/are false?

- A. Plotter is an output device.
B. Joystick is an output device
C. CD is a storage device

- (1) A only (2) B only (3) BC only (4) All A, B and C

10. Which shows the correct classification of computers, according to "Technology"?
- (1) Laptop computers, Super computers, Server computers.
 - (2) Digital computers, Analog computers, Hybrid computers.
 - (3) Main frame computers, Mini computers, Microcomputers.
 - (4) General purpose computers, Special purpose computers
11. Which of the following is **NOT** a scanning technology device?
- (1) OCR
 - (2) OMR
 - (3) Optical Mouse
 - (4) Barcode Reader
12. Identify the port that a modern mouse can be connected, -
- (1) Network port
 - (2) USB Port
 - (3) VGA port
 - (4) Parallel port
13. Telephone communication can be considered as examples communication.
- (1) Simplex
 - (2) Half duplex
 - (3) Full duplex
 - (4) Communication
14. What does modem stand for?
- (1) Magnetic Only Demodulator
 - (2) Memory Demodulator
 - (3) Modulator - Demodulator
 - (4) Magnetic Of Demodulator
15. What is a disadvantage of a computer network?
- (1) Speed of sharing data
 - (2) Open to hackers
 - (3) Controlling software management
 - (4) Cost of individual license copies

16. What is the topology of the computer network shown in the following figure?



- (1) Bus
 - (2) Ring
 - (3) Star
 - (4) Mesh
17. What hardware/software is needed to prevent unauthorized access to a network?
- (1) A modem
 - (2) A firewall
 - (3) A gateway
 - (4) A router
18. Large computer files can be compressed before storing them. Which one of the following is the usual reason for doing that?
- (1) Make it more difficult for hackers to read
 - (2) To reduce the storage space needed
 - (3) To add more security to the file
 - (4) To prevent unauthorized access
19. A nibble is equal to
- (1) 1 bit
 - (2) 2 bits
 - (3) 3 bits
 - (4) 4 bits
20. 1 Gigabyte is equivalent to
- (1) 1000MB
 - (2) 1024x1024bits
 - (3) 1024x1024x1024 bytes
 - (4) 1000x1024 KB

21. Consider the following statements about Unicode.

A-It can represent 128 characters.

B-It can be used in internet web pages and online newspapers.

C-Each character has a unique value.

Which of the above statement(s) is/are true?

- (1) A only (2) B only (3) A & B only (4) B&C only

22. Which of the following represents the BCD value of 65?

- (1) 110101₂ (2) 101110₂ (3) 01100101₂ (4) 1010110₂

23. Which of the following represents ASCII "H", if "G" is represented by 1000111₂?

- (1) 1000110₂ (2) 1001000₂ (3) 1001001₂ (4) 1001011₂

24. The binary equivalent of the octal number 54₈ is,

- (1) 010111₂ (2) 100111₂ (3) 101100₂ (4) 101101₂

25. The value of E3₁₆ is equivalent to,

- (1) 226₁₀ (2) 227₁₀ (3) 228₁₀ (4) 327₁₀

26. Which one of the following values is not equivalent to 2CB₁₆?

- (1) 715₁₀ (2) 1011001011₂ (3) 1313₈ (4) 567₈

27. P=1101₂ and Q=111₂. The value of P+Q is

- (1) 10100₂ (2) 10110₂
(3) 1100₂ (4) 11000₂

28. Kumara is studying in A/Ls. He can select physics with Chemistry, or ICT for his A/L subjects. What are the gates that represent above scenario?

- (1) AND & after OR (2) OR and after AND
(3) OR & after OR (4) AND & after AND

29. The following is a truth table of a certain logic gate that has 2 inputs. The logic gate is

A	B	Output
0	0	1
0	1	1
1	0	1
1	1	0

- (1) NAND (2) AND (3) NOT (4) NOR

30. Why we use Ctrl + Z in application software?

- (1) To copy a text.
(2) To paste a copied text.
(3) To delete a text.
(4) To undo.

31. The computer network of "Sankalpa" allows many users to connect to the server computer and to work. The operating system of this network is...
- (1) Multiuser (2) Multi-processing (3) Multi-tasking (4) On-line
32. Which of the following is/are function(s) of an operating system.
- A-Providing interface between user and hardware
B-Allocating memory needed to run software
C-Administering/ managing of computer process
- (1) A only (2) B and C only (3) C (4) All A,B and C
33. In Word processing, when you want to view multiple pages at once, you would use
- (1) Print preview (2) Normal view
(3) Page layout view (4) Outline view
34. In Word processing software, what is the shortcut to find out an item (a word) in a document..
- (1) Alt+S (2) Ctrl +C (3) Ctrl +F (4) Ctrl +S
35. In Word processing software, One has repeatedly miss-spelt the word "Sun" as "Son". Which of the following is suitable to correct it
- (1) Delete and Re-type (3) Find and Replace
(2) Auto correct (4) Spelling and Grammar.
36. Which of the following is true about spreadsheet software?
- (1) A cell address is an intersection of a row and a column.
(2) Labels are aligned to the right side of a cell.
(3) Values are aligned to the left side of a cell.
(4) Absolute cell address is changed when it is copied to another cell.
37. Which one of the following helps to apply special effects for a slide in electronic presentation software?
- (1) Slide Transition (2) Slide Layout (3) Slide Master (4) Slide Sorter
38. One piece of data about a single person or thing is known as a
- (1) Record (2) Table (3) Field (4) Data base
39. Which of the following facility/ facilities can be used to enter data into a database?
- A-Table B-Query C- Form D-Report
- (1) A only (2) A &B only (3) C &D only (4) A &C only
40. In programming variables are used to
- (1) Give commands (2) Store values
(3) Convert codes (4) Recognize word



Devi Balika Vidyalaya – Colombo 08
Information & Communication Technology –II

First Term Test - 2016

2 Hours

Index No

Grade 11.....

- * Answer first question and four other questions only
- * First question carries 20 marks and each of the other questions carries 10 marks.

1. Write short and exact answers

- i. Write three fields in the society in which ICT is used. Give an example for each.
- ii. State one advantage and one disadvantage of a bus topology over a ring topology
- iii. Which key in the computer keyboard is used to get a copy of the screen?
- iv. Nalinda and Malinda have to prepare a book for their Assessment. Nalinda used the Dot matrix printer and Malinda used the Inkjet printer to get the printout. Write your intension/idea about their printouts
- v. Arrange the following numbers in ascending order.
 57_8 , $2E_{16}$, 65, 100011_2
- vi. Write two disadvantages of mobile phones.
- vii. A cell phone is reloaded by a recharge card. Recharge card number is entered and validated into the mobile phone. If it is correct, the money is added to the user's account. After that, balance of the current account is informed to the customer. Identify input, process and output in this scenario.
- viii. Classify the following software as either "System software" or as "Application software".
MacOS, Opera, Adobe Photoshop, Linux
- ix. Write two examples for analogue devices
- x. Name the following devices



A



B

2 X 10 = 20 Marks

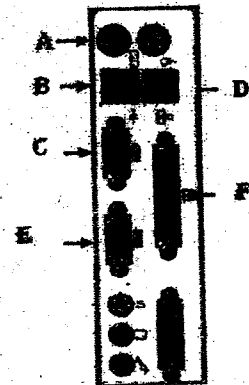
2.

a. A School maintains an internal computer network. It spans all the divisions of school such as office, computer laboratory, staff room, science laboratory, and library.

- i. Write down any two advantages this school obtains by using this network.
- ii. E-mail can be sent through this network among teachers. Write down an advantage by using this system.
- iii. Imagine, a video conference facility is to be established for students, where they can view the events taking place within another side of the school. Write down two devices for this establishment.
- iv. Give one security mechanism to ensure that authorized people can only use this network.

b. Answer the following question using the picture that given below.

- i. Name A, B, C, D, E & F.
- ii. State two devices that connect with Port A & their colours?
- iii. Which port is used to connect the computer to a network or to Internet?
- iv. What does USB stand for?



(10 Marks)

03. The following fields from a database table containing the details of members of a sports club.

- i) Write down suitable data types for each of the following fields.
 - a. Member Number.
 - b. Member Name.
 - c. Address.
 - d. Subscription for the year.
 - e. Male / Female
 - f. Date of birth.

ii) Briefly describe the following relational database concepts.

a. Data redundancy.

b. Primary key.

c. Data backup.

iii) Very rural school in Polonnaruwa was awarded as the best school last year. The principal said that one of the reasons to the award is the vigour and the unity of ICT club. She further explained the importance of presentations and website.

a. Write 2 points to consider when preparing presentation to develop that school.

b. Write 2 things that should be included in the school website.

(10 Marks)

04. A football club uses a spread sheet package to handle income generated from various sources.

	A	B	C	D	E	F	G	H
1	Income (Rs.)	JAN	FEB	MAR	APR	MAY	JUN	TOTAL
2	Members	10000	15000	17000	17500	17000	16000	
3	Advertisement	20000	15000	15000	13000	17000	18000	
4	Donation	10000	10000	15000	5000	3000	7000	
5	Sports events	25000	35000	45500	7500	3400	8300	
6	Musical events	44000	34000	43000	33500	73000	31500	
7	AVERAGE							

i) Name two other spreadsheet packages

ii) Give two suitable chart types to represent income obtained by advertisement every month.

iii) Write down a suitable function in cell H2 to represent total income obtained from members in first six months?

iv) Write down a suitable function or formula in cell B7 to represent average income obtained in month of January.

v) Write down a suitable formula in cell H7 to represent total income obtained in first six months

(10 Marks)

5. i. Define the following terms

a. Solution space

b. Alternative solutions

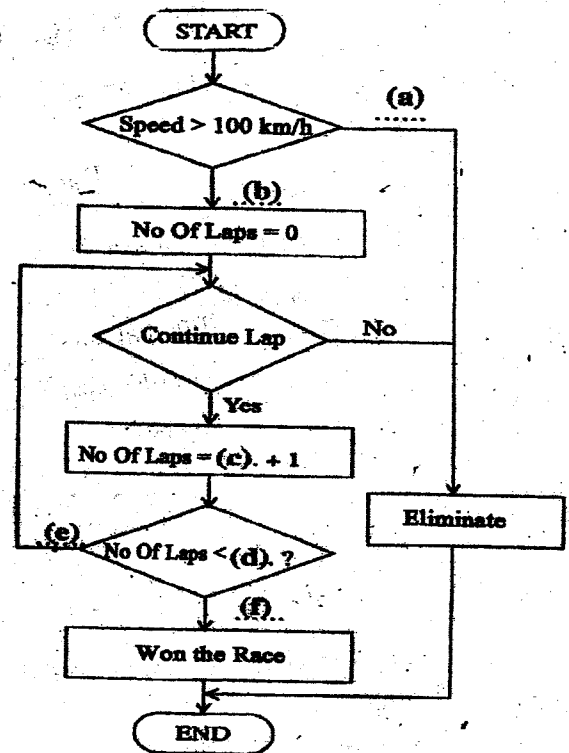
c. Algorithms

ii. The given flow chart shows details of car race competition. Racers always need to keep their speed greater than 100 km/h, and also have to complete 50 laps in to win the race. Participants who complete the 50 laps will be won the race. Others who couldn't complete the laps will be eliminated from the Race.

a. What are the control structures can be identified in the flow chart?

b. Fill the following flow chart according to the above scenario.

c. Write a pseudo code for the logic indicated by flow chart.



(10 Marks)

6. Write short notes for three of followings

A. Disadvantages of social media

B. Information & Communication Technology in health sector

C. Advantages of computer games

D. 5th Generation Computers

(10 Marks)